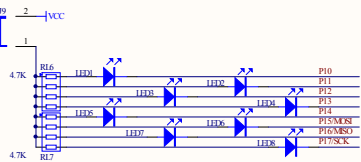
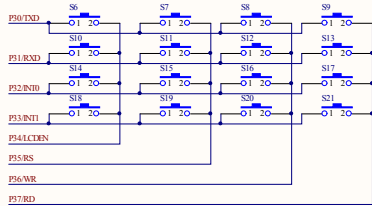


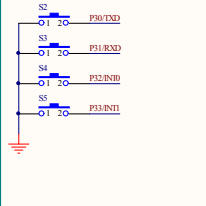
供电、程序下载、串口通信三合一模块



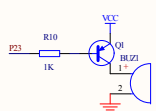
流水灯模块



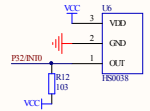
矩阵键盘模块



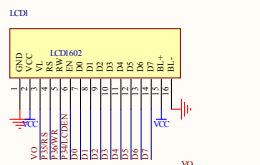
独立键盘模块



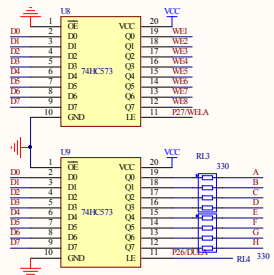
蜂鸣器模块



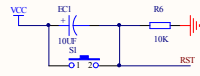
红外接收模块



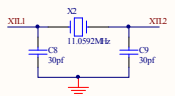
1602液晶接口电路



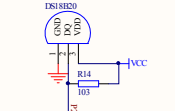
数码管锁存器模块



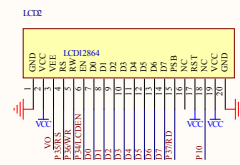
复位电路



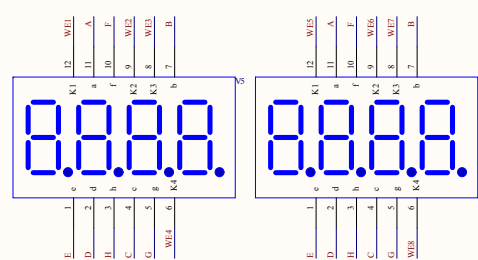
单片机 晶振电路



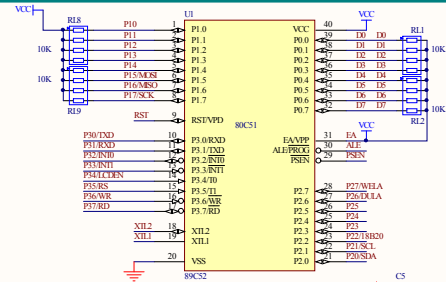
DS18B20
温度传感器接口



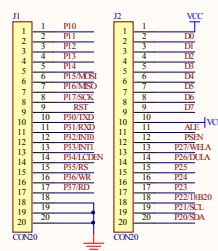
12864液晶接口电路



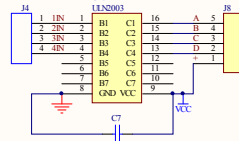
8位共阴极数码管



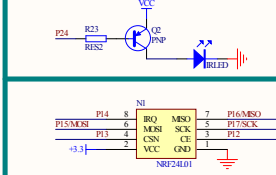
主控芯片



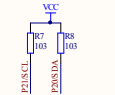
排阵引出所有IO口



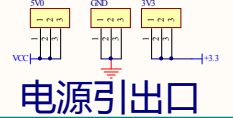
电机驱动模块



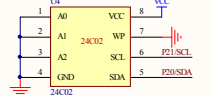
NRF24L01+
2.4G无线模块接口



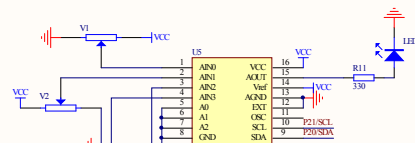
I2C总线



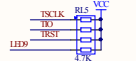
3.3V稳压电路



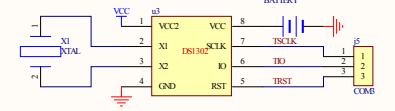
AT24C02
EEPROM模块



PCF8591
数模转换模块



DS1302
实时时钟模块



QX-MCS 51单片机开发板
V2.0